

KONICA MINOLTA

workplacehub

WORKPLACE HUB
RETHINK IT ON YOUR TERMS

Giving Shape to Ideas

Increasingly complex work environments are a challenge for every business. Thus, IT can be the biggest enabler, but also the worst bottleneck for workplace efficiency. Very often it is changing too fast to keep up.

TOP FIVE IT CHALLENGES OF SMBS



Your IT is not flexible enough to keep up with your business

Non-scalable IT infrastructure is holding you back from doing your work most efficiently. This can lead to lack of agility and flexibility growing your business.



The complex management and maintenance of your IT causes you headache

Keeping your office IT up-to-date, handling technical issues and monitoring your systems can be a time-consuming and frustrating task - especially when no or only few internal IT resources are available.



Office IT costs are high and hard to predict

Having complete transparency of your IT operations is a huge task, considering different teams, departments and individual users. Precise cost control is necessary to ensure proper business planning.



Worries about the security of your data and systems keep you up at night

The safety of sensitive company data is key. A system breakdown or virus attack can cause big damage to your business in case no backup solution and recovery strategy is in place. In addition, ensuring GDPR compliance is a complex topic for businesses and can result in high penalties in case of a breach.



Remote working becomes the new normal

Working from home or other places away from your physical workplace is no longer a convenience, but a necessity to keep your business running. Being equipped with the right tools to keep your teams' productivity and efficiency high is crucial.

With Workplace Hub, these challenges become a thing of the past.

WORKPLACE HUB IS YOUR ENABLER FOR WORK SIMPLICITY. INTELLIGENT. CONNECTED. SECURE.

Workplace Hub frees you up from daily IT hassles. Let us take care about your IT and application management, so you can keep your business running and concentrate on high quality solutions for your customers.

We are specialised on your small business' challenges, delivering holistic consultancy and support. We are close by to help quickly in case of IT emergency.

Workplace Hub combines industry-leading hardware, software and security with a full suite of managed IT services and solutions into a single, scalable IT service.

With one contract and a fixed monthly price, Workplace Hub puts you in control of your IT, while providing the convenience of working with a single provider for all of your technology needs both now, and for the future.

And for peace of mind, the all-in-one IT ecosystem has you covered with secure back-up, maximum network protection, and is monitored 24/7.

We Rethink the workplace, so it works for you.

INTRODUCING THE NEXT GENERATION OF WORKPLACE HUB

The ongoing COVID-19 pandemic has acted as a catalyst for remote and hybrid work environments. Cloud services provide the flexibility needed to adapt quickly.

Workplace Hub is the response to rapidly changing circumstances and the increased need of cloud capabilities, ensuring compatibility with a wide range of Microsoft and other third-party solutions.

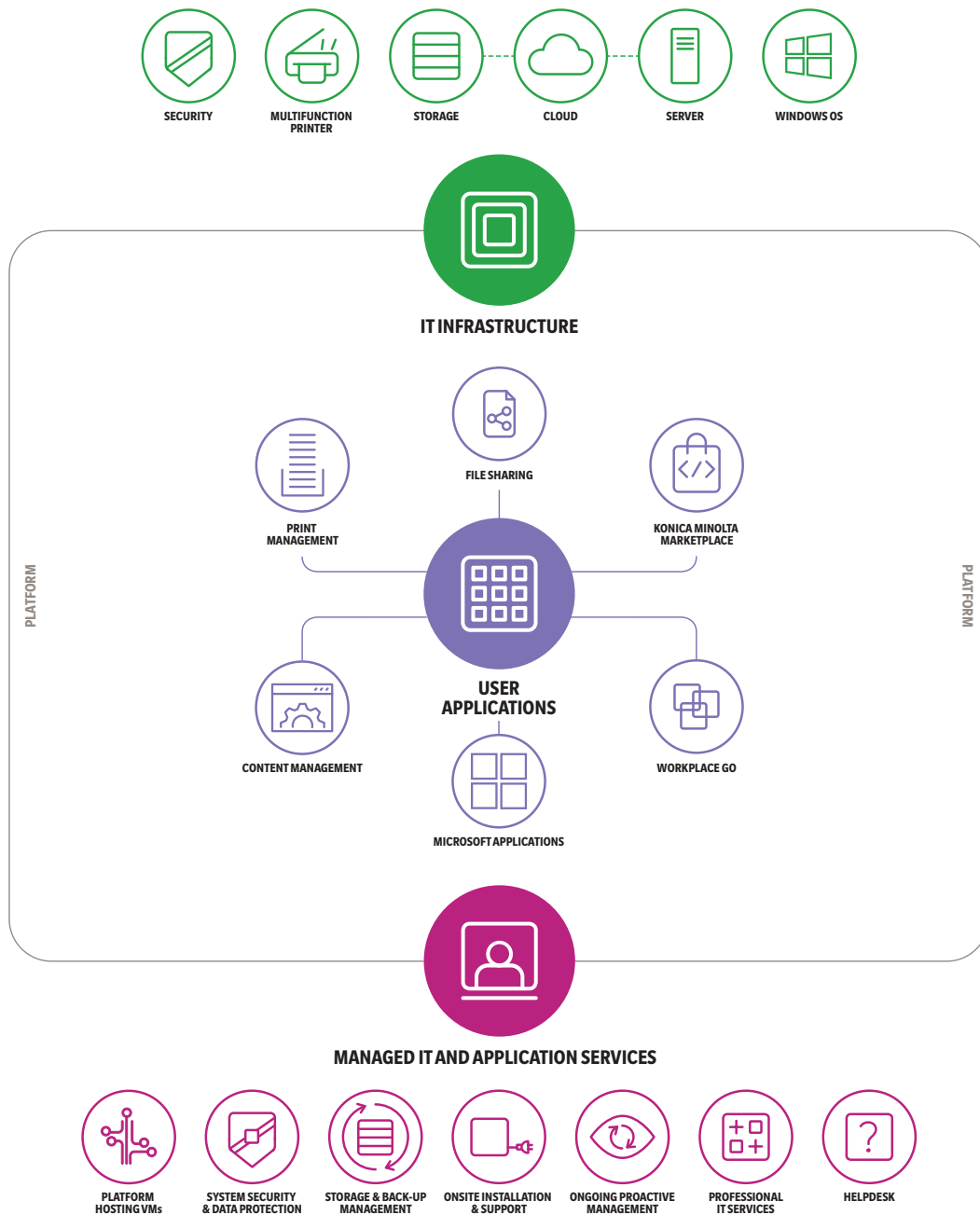
See where Workplace Hub can take you today.

Rethink: IT on your terms.

ONE COMPLETE ECOSYSTEM

Workplace Hub unifies your IT and creates an all-in-one ecosystem that makes working easier and more productive.

- A whole range of IT tasks managed for you, from setup and installation to ongoing monitoring and management and 24/7 helpdesk support, freeing up your time and resources.
- Access next generation IT from your multi-function printer. Everything is brought together seamlessly increasing the value of your existing office space.
- Easy access to the world of Microsoft cloud applications.





MANAGED IT AND APPLICATION SERVICES

Free up your time and energy by letting us take care of your IT management.

We're here to look after complex, critical, or time-consuming tasks, empowering you to focus on your business. We can manage a whole range of functions such as storage, security, installation, and migration. The helpdesk ensures we're always available for support.



PLATFORM HOSTING VMS

Hosting your business applications on Workplace Hub can centralise and minimise your legacy IT footprint.

- Applications are always securely protected, backed up, and proactively monitored
- Seamlessly collaborate with existing print/document related software



HELPDESK

A range of support is available, from administration of your Workplace Hub.



SYSTEM SECURITY & DATA PROTECTION

We're fully equipped to manage the complex task of protecting your data and systems from malicious attacks. We use latest firewall technology, which offers sophisticated security to keep you safe at all times.

- All data stored on Workplace Hub is protected
- Quick and easy security level changes are available with a simple request



STORAGE & BACK-UP MANAGEMENT

Robust data management and storage so you never lose critical information.

- Save your data locally or in the cloud. All local data is backed up to a Network Attached Storage (NAS) device, All data backed to the cloud are securely stored at Konica Minolta data centers that comply with local country data storage regulations
- All data is encrypted for added security



ONSITE INSTALLATION & SUPPORT*

We'll complete the initial setup, configuration and training so Workplace Hub works perfectly from the outset.

- Network, multifunction printer setup
- Conversion of existing 2012 or higher servers
- Migration and integration of existing complex data
- Physical security against theft
- Training on system usage
- Upgrading expired systems such as Windows Server 2008



ONGOING PROACTIVE MANAGEMENT

Once Workplace Hub is installed, we remotely monitor and manage the entire system for you, finding and fixing problems before they impact your business.



PROFESSIONAL IT SERVICES

We can also provide further support for your specific IT projects, including consulting and installation of additional equipment, software and services.

* Some of these services may be billable. Please contact your sales representative for further information.



IT INFRASTRUCTURE

Everything brought together seamlessly, using technology that evolves with your business.

Workplace Hub includes a multifunction printer, data storage, Hewlett Packard Enterprise server, Firewall with Unified Threat Management (UTM).

It's designed to evolve continually as system updates and new features become available. Choose between server-only version or the combination with MFP functionalities.



SECURITY

Unrivaled system security through latest firewall technology with Unified Threat Management (UTM).



MULTIFUNCTION PRINTER

Housing a powerful engine, the bizhub® i-Series allows for quick-response, high-performance operations whenever and wherever.*

- Konica Minolta's bizhub i-Series A3 Colour MFP range
- High resolution printing, scanning, copying or faxing
- Scanned documents and incoming faxes are digitally converted to ensure anywhere access
- Print management applications (cost management, secure print, scan workflows) are seamlessly integrated



STORAGE

A data storage solution that grows with your business and never interrupts your service.



CLOUD

Your local server is backed up by Konica Minolta data centers that comply with country regulations providing additional security for your data.



SERVER

Customised Hewlett Packard Enterprise server.

- Reduced air friction and noise
- Integrated battery backup
- Uninterrupted Power Supply (UPS) available
- Intel® Xeon® scalable processor



WINDOWS OPERATING SYSTEM

Native design allows for highest Microsoft compatibility and cloud capabilities

* Various model specifications are available to support your printing and scanning needs. Contact your local sales representative for more information.



USER APPLICATIONS

No matter what the future will bring – we’ve got you covered.

Our scalable service portfolio is flexibly built and adapts to the development of your work environment by bringing you the applications you need, when you need them.



WORKPLACE GO*

A simple way to access all your key information from one place to improve productivity, collaboration, and communication.

- Customise the interface to your company and culture
- Access all your individual information for your day through ‘My Board’
- Track tasks, set deadlines or find and share key project information across project spaces, team groups or specific communities through ‘My Team’
- Find essential company information and documents in a sophisticated ‘My Company’ space
- Cloud-based tools that ensure mobile access, security and access to data anywhere



FILE SHARING

Share ideas immediately and securely with colleagues and collaborators.

- Easy-to-use web interface for files stored on-premise
- Data is encrypted automatically
- Notifications help make it easy to follow communication



MICROSOFT CLOUD APPLICATIONS

Access to a full range of Microsoft cloud applications

- Compatibility by design through Windows OS
- Optional usage of cloud capabilities



KONICA MINOLTA MARKETPLACE

Konica Minolta MarketPlace is the easy way to browse, purchase and download apps specifically designed for your Konica Minolta multifunction printers (MFP).

- Scan to Cloud Apps (OneDrive, Google Drive, SharePoint and more)
- Customisable Control Panel -just as all of the departments in your business aren’t the same, your bizhub MFPs don’t have to be either with customisable finger-swipe panels that help increase productivity.
- Cutting-Edge Technology – With new apps continually added to the Konica Minolta MarketPlace, you’ll always have the latest advances in technology right at your fingertips.



PRINT MANAGEMENT*

Effective cost control and improved document workflows with optimised printing through

- Detailed tracking of printouts and costs
- Centralised user and role management
- Cost assignment and chargeback
- Budget and quota management



CONTENT MANAGEMENT*

Our business solutions provide a 360° view on your documents and information. As such, they help improve the performance of your business by helping people store, find, and approve information effectively.

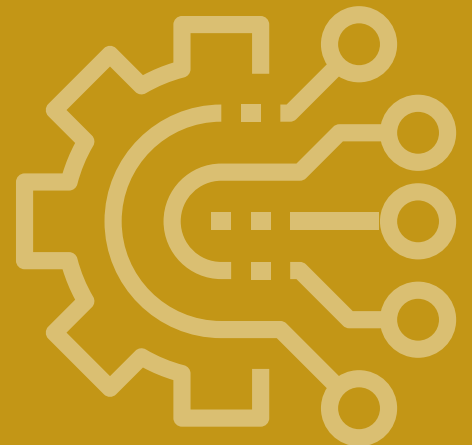
- Flexible mobile working – print documents and access information from anywhere
- Save valuable time thanks to the automation of routine office tasks
- Cut your costs by offering fast access to company-relevant documents and data

* Optional add-on

YOUR BENEFITS AT A GLANCE

Workplace Hub integrates physically and virtually into the SMB office environment and brings different parts of your IT environment into one integrated service – so you don't need to handle a range of tools, systems and vendors anymore.

- Provides you with peace of mind about your IT infrastructure and security
- Reduces total IT spend and cost predictability for life of term
- Gives you freedom to focus on what matters most – growing your business
- Scalability offers customisation to meet your individual needs and follow the development of your business
- Workplace Go provides the digital workplace for your communication, collaboration, productivity and social networking needs - anywhere



FEATURES OVERVIEW

| Features* | Notes* |
|------------------------------------------------|---------------------------------------------------------------------------------------------------------------------------------------|
| Active directory integration | Compatible with AD 2012, 2016 and Azure Active Directory |
| Backup | Back up of your files, virtual machines and individual settings to cloud, local storage, or both |
| Browser support | Chrome, Firefox and Microsoft Edge |
| Certifications | Contributes to a GDPR compliant environment |
| File sharing | Upload and share files internally; Supports SMB drives and Microsoft OneDrive |
| IC card reader | MFP authentication; Other options available |
| Identity management | Simplified user and role management with (Azure) Active Directory integration |
| Konica Minolta MarketPlace | Purchase applications; License management |
| MFP applications – Open API | Open API support; App server for bizhub MFP fleet; IWS App Support |
| MFP hardware | bizhub i-Series A3 colour MFP range |
| Print and copy speed¹ | 25 ppm – 65 ppm / A4 |
| Remote monitoring and management | Fully managed 24/7 Remote Monitoring |
| Scan speed (simplex/duplex)¹ | 100/200 ipm – 140/280 ipm |
| Unified threat management | Latest firewall technology |
| Virtualisation layer | Install and run customised virtual machines with the latest 64-bit Windows OSs Added support for remote access to virtual machines |
| Workplace Go | Optional add-on. Requires an Office 365 license |

COMBINED SOLUTIONS FOR GREATER FLEXIBILITY



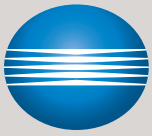
WORKPLACE HUB CORE:
Boost performance from
your server room



WORKPLACE HUB SMART:
Foundations for success from
your office space

* Final product features may vary depending on customers' individual requirements.

¹ Various model specifications are available to support your printing and scanning needs. Contact your local sales representative for more information.



KONICA MINOLTA

“**TAKE THE IDEA OF A
BETTER WAY TO WORK
AND MAKE
IT REAL**”

OUR PROMISE

As a global company with a strong local service network in over 150 countries, Konica Minolta helps you reach the next level in the digital maturity of your organisation, enabling you to run a successful, protected and sustainable organisation in an ever-changing world.

Through our long-standing experience in the management of printing, combined with strong expertise in IT services, we deliver the Intelligent Connected Workplace on your terms.

Named a worldwide Leader in Print Transformation by IDC (2020), we are your partner identifying and unlocking the potential digitalisation holds for you.

OUR PARTNERS

